

Building Futures For More Than 18 years.

### Our Mission

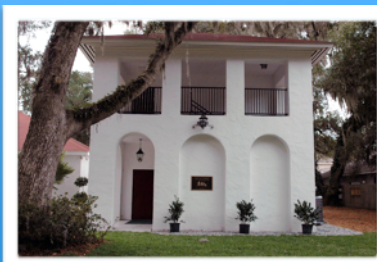
The Christian Montessori School serves children from 2 ½ through the sixth grade, using the philosophy and curriculum of Dr. Maria Montessori. The educational environment fosters respect, cooperation, order, choices with responsibility, and provides children with the opportunity to build themselves to their fullest potential. The school's peaceful and non-competitive atmosphere promotes strong character and human values.

At each stage of development, the child acquires the tools necessary for critical thinking, decision-making, and respect for all. Under the guidance of a certified Montessori educator, the child engages in work which results in a love of life and learning, fosters independence, and ensures self-esteem and personal growth.

Children are accepted and welcomed to the Christian Montessori School regardless of race or creed or color.

Parents must visit the Christian Montessori School in order to file an application for the child.

Students are eligible for acceptance in the preschool if they are three years of age or will be three years of age within 30 days of the first day of the school year. Exceptions may be made for students entering the program with prior Montessori experience.



**111 Menendez Avenue**  
**Saint Simons Island, GA 31522**  
**Phone: 912-638-1692**  
**Fax: 912-638-8171**  
**info@montessori.me**  
**[www.cmsssi.org](http://www.cmsssi.org)**



A SACS ACCREDITED INSTITUTION  
[www.montessori.me](http://www.montessori.me)

## The Quality of a Montessori Education

Unlike the educational fads that come and go, the Montessori method has been used for almost a century. It is a curriculum that permits children to progress at their own pace. Children are not forced to adhere to artificial norms. It is a demanding program for our teachers, because teachers work with students as individuals, not as a class. Each child's progress is monitored individually and lessons are offered to children when they are developmentally ready; not on a fixed timetable. This creates an academic environment that is enthusiastic, energetic, and most importantly, effective.

### A Child-Centered Community

The children attending CMS are a diverse student body. Exposed to a broad based academic curriculum including phonics, reading, language, mathematics, geography, and science, the school's graduates are valuable additions to other public and private schools. In the multi-age classrooms, the children learn to collaborate with each other. This opportunity for mentoring encourages the children to develop strong leadership skills. Along with this goal comes a community in the classroom where kindness, support, and tolerance are practiced by every student every day.

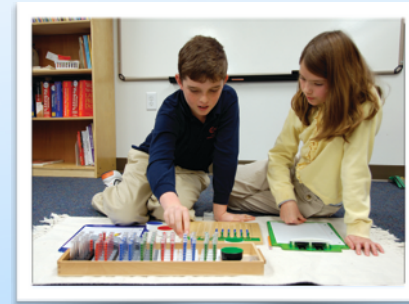
### Special Features of CMS

Dr. Montessori observed that one of the basic needs of young children is stability, which, in turn, creates security, order, and independence. These important traits are stressed daily both in the physical environment and in the social setting. The same group of children comes every day to the same room and interact with the same adults, usually spending three years with the same teacher.

Focusing on the needs of the children, the teachers, together with their assistants, are constantly helping students experience individual instruction, offering opportunities to make choices, and the necessary time to concentrate on a variety of materials. The final result is the best of both worlds: The comfort of a nurturing environment combined with the challenging stimulation of a Montessori education.

### Enrichment

The Spanish, Art, Physical Education and Christian Education programs are part of the core curriculum in the Primary and Elementary classes. CMS also offers extra-curricular programs in yoga, chess, art, organic gardening/wellness, and the school newspaper.



## What Sets Montessori Apart?

Montessori	Traditional
Mainly individual instruction	Mainly group instruction
Mixed Ability	Same-age groups with mixed ability
Children learn at their own individual pace and follow their own individualized educational learning plan	Children learn from a set curriculum according to a set time frame that is the same for everyone
Environment and method encourage self discipline and self exploration	Classroom discipline plan as a part of a school-wide plan enforced by teachers
Based on helping the natural development of the human being	Based on the transfer of a state-wide curriculum
Understanding comes through the child's own experiences via the hands-on materials and the promotion of children's self-exploration to find things out for themselves	Learning is based on subjects and is limited to what is given
Learning is based on the fact that physical exploration and cognition must be linked together for greater understanding of the material	Children sit at desks or in small groups and learn from a whiteboard and worksheets
The child's individual development and mastery brings its own reward and motivation therefore increasing self-esteem	Motivation is achieved by a system of rewards and punishments
Projects and reports are completed by students during school hours	Projects and reports are completed by students at home with parents